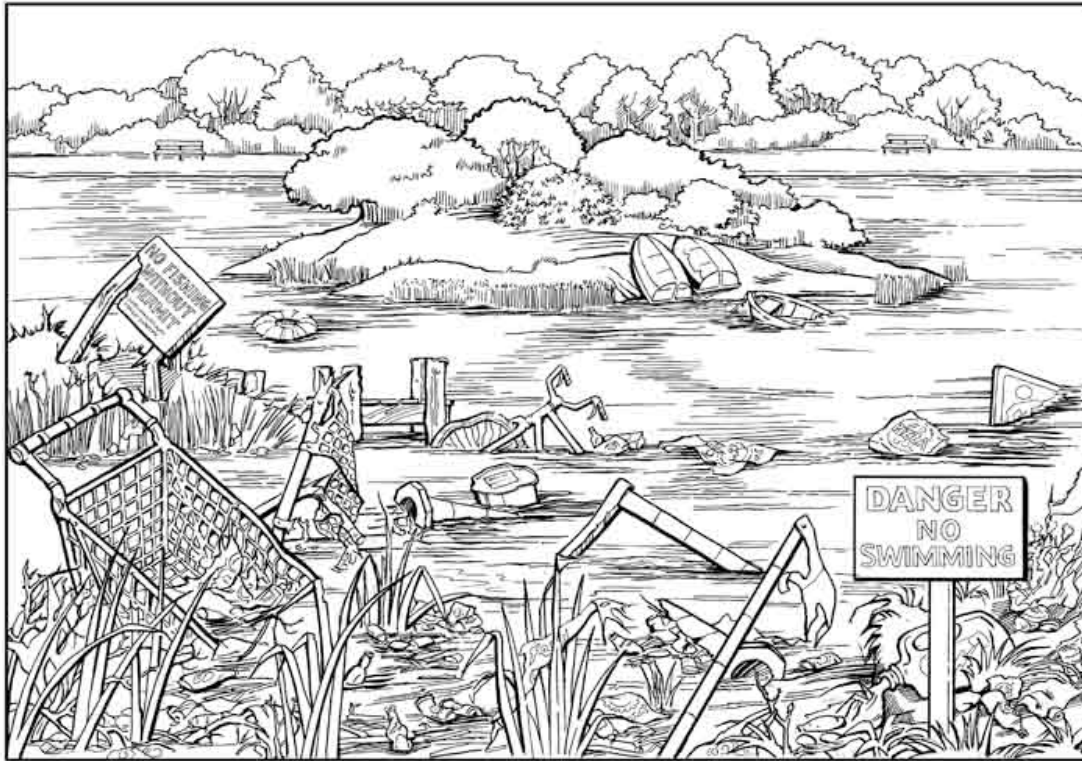


## Derelict park features

### 3) Lake with island



The drainage outlet is blocked resulting in stagnant water and algae. The lake is now choked with invasive plants in which debris has been dumped. The island is overgrown with weeds and the small pier is rotten and unusable.

- Estimated cost to drain, repair and refill the lake: £150,000.
- Estimated cost to reinstate the pier: £20,000.
- Estimated cost to clear and replant the island: £10,000.
- Purchase of rowing boats and canoes: £6,000.